

Monthly Stitch-A-Long

Join me for a year-long freebie stitch-a-long!

Want to participate in a year-long stitch-a-long but worried about committing to such a large project? I have the perfect SAL for you! While this SAL will extend for the entire length of the year, the monthly stitching requirement is minimal. This means that you will be able to fit it into your stitching schedule with ease. What's even better is that it is a **stitch-from-stash** SAL. While I will be providing the floss colors that I am using each month, I encourage you to use what you have on hand to make this piece entirely your own!

The design features a small motif that represents each month. For example, January is a snowflake. February is geared towards Valentine's Day. I think you get the idea...

What you will need:

Fabric:

One piece of fabric measuring 11 X 13 inches for 14 or 28 count (2 over 2). It will be stitched in portrait orientation (taller than it is wider) and allows for a 2 inch margin on all sides.

I chose to work with my hand-dyed fabric Garden Gate. I think this design will look particularly fabulous on dark fabrics, especially when paired with bright flosses. However, I also love the appearance of white fabric with more muted colors. But the choice is entirely up to you!

Floss:

The only color of floss that requires a significant amount will be the border color. You will need 2 skeins of whatever color you choose.

The rest of the floss colors are minimal and change each month but will feature a full rainbow of colors including blues, pinks, greens, purples, and oranges.

While I have provided the entire border, do not feel required to stitch the entire border as we begin. I will be stitching the border as I go along each month. If you would like to stitch the entire border as we get started, please make sure to triple count all those stitches so that the boxes are the proper size. I don't want the frog visiting you all later in the year!

Little Moments

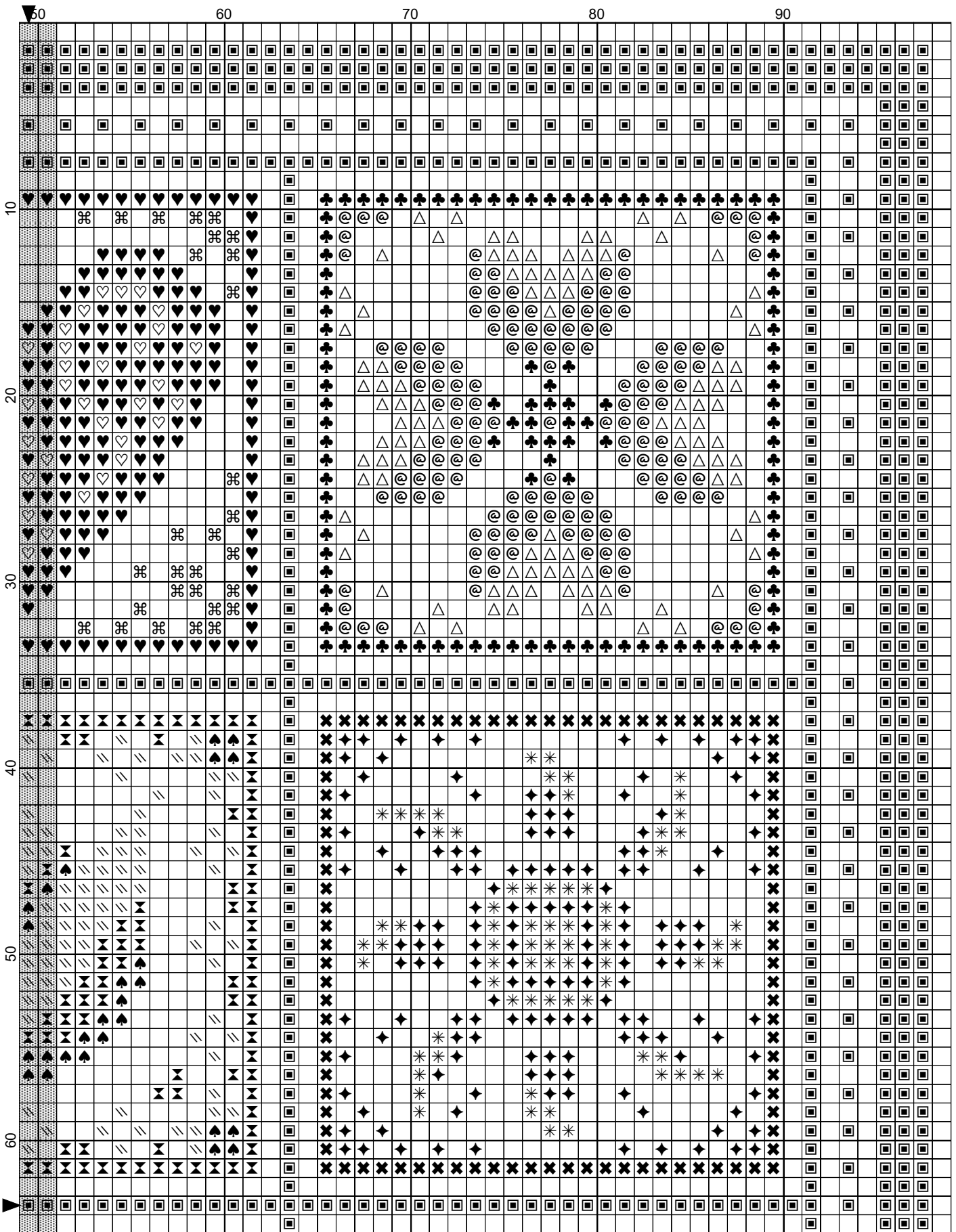
This is a stitch-from-stash SAL, please feel free to choose your own materials for this design. Listed below are the colors I am using.



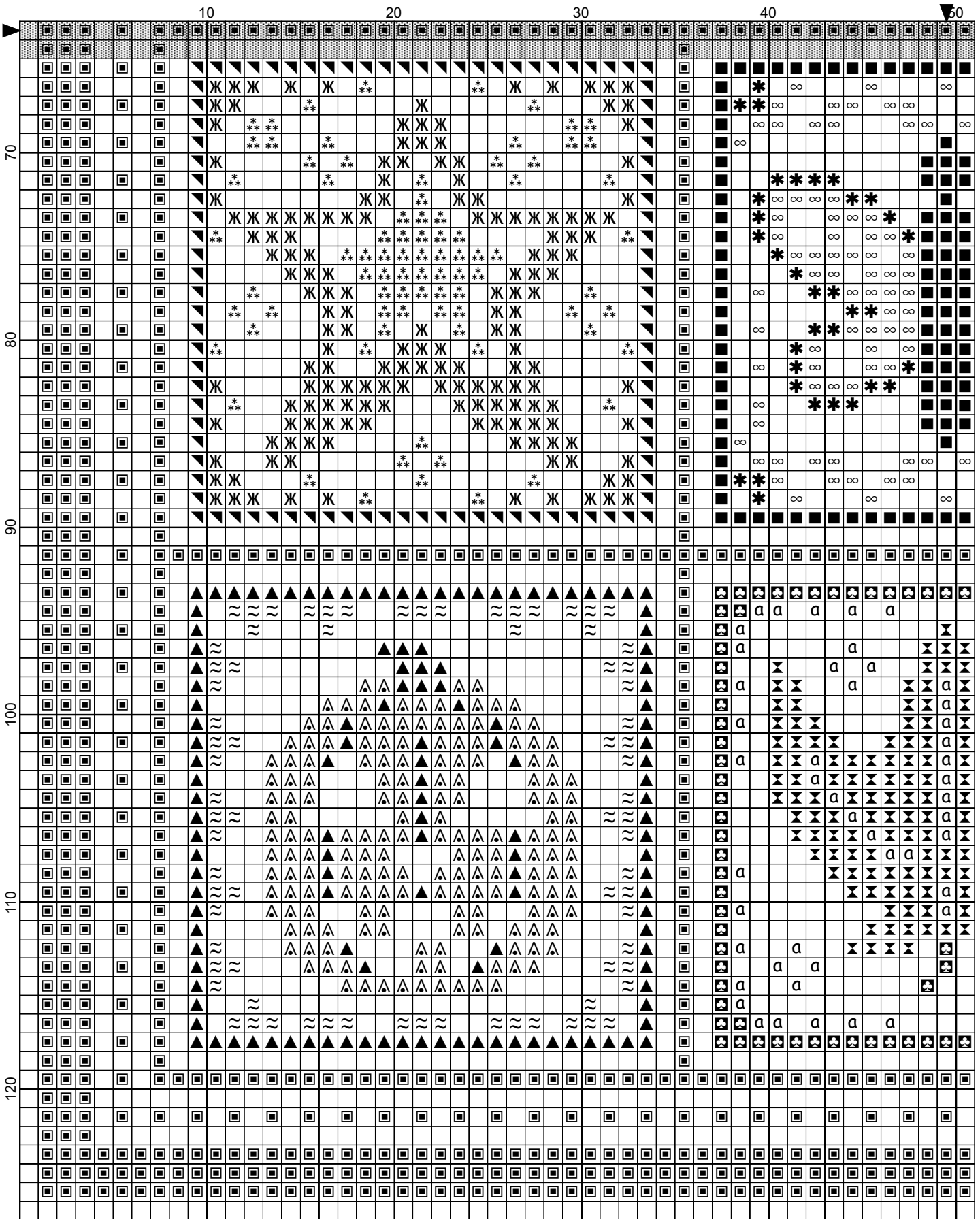
Legend (2 strands of floss):

| | | | |
|---|-----------------|----|-----------------|
| ▣ | DMC Cotton 3722 | ✕ | DMC Cotton 976 |
| ★ | DMC Cotton 793 | ◆ | DMC Cotton 3852 |
| ≡ | DMC Cotton 794 | * | DMC Cotton 743 |
| ✓ | DMC Cotton 157 | ▼ | DMC Cotton 3810 |
| ♥ | DMC Cotton 335 | Ж | DMC Cotton 597 |
| ⌘ | DMC Cotton 3706 | ** | DMC Cotton 3766 |
| ♡ | DMC Cotton 3708 | ■ | DMC Cotton 3340 |
| ♣ | DMC Cotton 580 | *~ | DMC Cotton 3341 |
| @ | DMC Cotton 581 | ∞ | DMC Cotton 3824 |
| △ | DMC Cotton 166 | └ | DMC Cotton 3826 |
| ↑ | DMC Cotton 562 | ↙ | DMC Cotton 3853 |
| ⤵ | DMC Cotton 563 | ○ | DMC Cotton 3854 |
| & | DMC Cotton 369 | ▲ | DMC Cotton 720 |
| ♠ | DMC Cotton 718 | △ | DMC Cotton 971 |
| ⌘ | DMC Cotton 3607 | ~ | DMC Cotton 722 |
| ∞ | DMC Cotton 3608 | ☒ | DMC Cotton 666 |
| | | α | DMC Cotton 3706 |
| | | ⌘ | DMC Cotton 891 |

Little Moments by Sapphire Mountain Handcrafts



Little Moments by Sapphire Mountain Handcrafts



Little Moments by Sapphire Mountain Handcrafts

